



**Office of the President of the Philippines**  
**Office of the Presidential Adviser on Peace, Reconciliation and Unity**  
7th Floor, Agustin 1 Building, F. Ortigas Jr. Road, Ortigas Center, 1605 Pasig City Tel (+632) 636-0701 Fax No: (+632) 638-2216

**INVITATION TO BID FOR THE PROCUREMENT OF SUPPLY,  
DELIVERY AND CONSTRUCTION OF PLANT NURSERIES UNDER  
THE SIPAT: MAXIMIZING HUMAN CAPITAL AND NATURAL  
RESOURCES IN THE CAR PROJECT**

1. The Office of the Presidential Adviser on Peace Reconciliation and Unity (OPAPRU), intends to apply the sum of **Fifteen Million Pesos (PhP15,000,000.00)** being the ABC for the **Procurement of Supply, Delivery and Construction of Plant Nurseries under the SIPAT: Maximizing Human Capital and Natural Resources in the CAR Project**. Bids received in excess of the ABC shall be automatically rejected at bid opening.

LOT NO.	LOCATION/PLACE OF DELIVERY
Lot 1 PHP3,000,000.00	Sitio New Bangad, Brgy. Nambaran, City of Tabuk
Lot 2 PHP2,700,000.00	Brgy. Kinama, Rizal, Kalinga
Lot PHP2,000,000.00	Sitio Ileb, Brgy. Nambaran, City of Tabuk
Lot 4 PHP1,000,000.00	Brgy. Basao, Tinglayan, Kalinga
Lot 5 PHP1,000,000.00	Brgy. Sumadel, Tinglayan, Kalinga
Lot 6 PHP1,000,000.00	Brgy, Gohang, Banaue, Ifugao
Lot 7 PHP900,000.00	Brgy. Marcela, Sta.Marcela, Apayao
Lot 8 PHP900,000.00	Brgy. Calafug, Conner, Apayao
Lot 9 PHP1,250,000.00	Brgy. Dominglay, Licuan-Baay, Abra
Lot 10 PHP1,250,000.00	Brgy. Ducligan, Bucloc, Abra

2. The OPAPRU encourages the submission of bids for the Procurement Project. The delivery date of the goods shall be made on the date indicated in the Notice to Proceed. Interested bidders should have completed, within five (5) years from the date of submission and receipt of bids, a contract similar to the Procurement Project. The description of an eligible bidder is contained in the Bidding Documents, particularly, in Section II (Instructions to Bidders) thereof.
3. Bidding will be conducted through open competitive bidding procedures using a **non-discretionary “pass/fail” criterion** as specified in the 2016 revised Implementing Rules and Regulations (IRR) of Republic Act (RA) No. 9184.

Bidding is restricted to Filipino citizens/sole proprietorships, partnerships, or organizations with at least sixty percent (60%) interest or outstanding capital stock belonging to citizens of the Philippines, and to citizens or organizations of a country the laws or regulations of which grant similar rights or privileges to Filipino citizens, pursuant to RA No. 5183.

4. Prospective Bidders may obtain further information from OPAPRU BAC Secretariat and inspect the Bidding Documents at the address given below during weekdays (Monday – Friday, except holidays) from 08:00 AM to 05:00 PM.
5. A complete set of Bidding Documents may be acquired by interested Bidders on **03 December 2022** from the given address and website(s) below and upon payment of the applicable fee for the Bidding Documents, pursuant to the latest Guidelines issued by the GPPB, in the amount of **Twenty-Five Thousand Pesos (PHP25,000.00)**. The Procuring Entity shall allow the bidder to present its proof of payment for the fees either in person, by facsimile or through electronic means.
6. The OPAPRU will hold a Pre-Bid Conference on **12 December 2022, (10:00AM)** at the Kapayapaan Conference Room, 7th Floor Agustin I Building, F. Ortigas Jr. Road, Ortigas Center, Pasig City, and/or through video conferencing or webcasting, which shall be open to prospective bidders.
7. Physical Bid Documents must be duly received by the BAC Secretariat at the office address indicated below **not later than 23 December 2022, (10:00AM)**. **Late bids shall not be accepted.** Bid Documents submitted through electronic means shall be accepted.
8. All Bids must be accompanied by a bid security in any of the acceptable forms and in the amount stated in **ITB Clause 14**.
9. Bid opening shall be on **23 December 2022, (10:30AM)**. Bids will be opened in the presence of the bidder/s representative/s who choose to attend either physically or through video conferencing or webcasting.
10. The OPAPRU reserves the right to reject any and all bids, declare a failure of bidding, or not award the contract at any time prior to the award of the contract in accordance with Sections 35.6 and 41 of the 2016 revised IRR of RA No. 9184, without thereby incurring any liability to the affected bidder or bidders.
11. For further information, please refer to:

**Bids & Awards Committee Secretariat**

3rd Floor Agustin I Bldg.  
F.Ortigas Jr. Road, Ortigas Center, Pasig City  
(02) 8636 0706 local 871

Issued on 1<sup>st</sup> day of December 2022, Pasig City.

  
\_\_\_\_\_  
**EDIR. ANDRES S. ANGUINALDO, JR.**  
*Chairperson*  
Bids & Awards Committee

## ANNEX A TECHNICAL SPECIFICATION

### A. PROCUREMENT PROJECT

Procurement of Supply, Delivery and Construction of Plant Nurseries under the SIPAT: Maximizing Human Capital and Natural Resources in the CAR Project

### B. APPROVED BUDGET FOR THE CONTRACT

Fifteen Million Pesos (PhP15,000,000.00) for the ten (10) lots.

- Lot 1 – PhP3,000,000.00
- Lot 2 – PhP2,700,000.00
- Lot 3 – PhP2,000,000.00
- Lot 4 – PhP1,000,000.00
- Lot 5 – PhP1,000,000.00
- Lot 6 – PhP1,000,000.00
- Lot 7 – PhP900,000.00
- Lot 8 – PhP900,000.00
- Lot 9 – PhP1,250,000.00
- Lot 10 – PhP1,250,000.00

### C. SPECIFICATIONS

<i>Lot Number</i>	<i>Quantity</i>	<i>Unit</i>	<i>Specification</i>
LOT 1	A. Project Signboard		
	32	sq. ft	Tarpaulin (4' x 8')
	27	bd. Ft.	2" x 2" x 8' Good Lumber
	1	Pcs	4' x 8' x 1/4" Marine Plywood
	2	kgs	Assorted CWN
			All equipment/tools to be used and labor requirements will be arranged by the contractor
	B. Structural Steel, GI Pipes		
	35	pcs	2" dia. GI Pipes Sch.40
	12	pcs	1.5" dia GI Pipe Sch.40
	12	pcs	1" dia GI Pipe Sch.40
			All equipment/tools to be used and labor requirements will be arranged by the contractor
	C. Metal Structure Accessories, Steel Plate		
	45	kgs	1/4" x 2" Flat Bar
	9	kgs	Welding Rod (ordinary)
			All equipment/tools to be used and labor requirements will be arranged by the contractor
	D. Metal Structure Accessories, Pipe Clamps		
	54	kgs	1/8" x 2" Flat Bar

		All equipment/tools to be used and labor requirements will be arranged by the contractor
E. Metal Structure Accessories, Bolts & Nuts with washer		
37.5	kgs	3/8 Bolts & Nuts with washer
		All equipment/tools to be used and labor requirements will be arranged by the contractor
F. Steel Plant Rack		
9	pcs	1" GI Pipe Sch.20
15	pcs	1" x 1/4" Angular Bar
14	pcs	2 x 2 x 5mm Steel Matting
6	kgs	Welding Rod
		All equipment/tools to be used and labor requirements will be arranged by the contractor
G. Sliding Door (Steel Frame)		
1	pc	1" GI Pipe Sch.20
5	pcs	1" x 1/4" Angular Bar
1.8	sq.m.	Insect Net (Mesh 24)
1	kgs	Welding Rod
8	pcs	10mm Roller Bearing
		All equipment/tools to be used and labor requirements will be arranged by the contractor
H. Painting Works, Metal		
1.2	gallon	Red Oxide Primer
3	gallon	Acrylic Paint (white)
3	liter	Paint Thinner
12	unit	Consumables
		All equipment/tools to be used and labor requirements will be arranged by the contractor
I. Roofing and Covering		
40	sq.m.	PE Plastic 200 micron
50	sq.m.	Insect Net (Mesh 24)
50	sq.m.	Net Shade, 30% shading
500	pcs.	1" Tek screw
30	pcs.	1" x 0.5mm x 3m Aluminum C-Channel
45	pcs.	1" x 2m x 2mm Wiggle Wire
		All equipment/tools to be used and labor requirements will be arranged by the contractor
J. Well Drilling		
8	bags	Bentonite Cement
		All equipment/tools to be used and labor requirements will be arranged by the contractor
K. Casing Installation and Well Development		
6	pcs	6" Plain GI Casing
6	pcs	3" Plain GI Riser Pipe

	6	pcs	6" Couping
	4	pcs	3" Couping
	2	pcs	6" GI Nipple
	2	pcs	3" GI Nipple
	2	pcs	3" GI Elbow
	2	pcs	Slotted Pipe
	2	pcs	6"x6m Sch.40 Deep Well Screen Pipe
	2	cu.m.	Pea Gravel
	6	pcs	Centralizer
	2	can	Solvent Cement
	2	pcs	Transition/Adopter Pipe
	2	pcs	Guide Shoe
			All equipment/tools to be used and labor requirements will be arranged by the contractor
	L. Supply/Delivery and Installation of Solar-based Submersible Pumping System with Complete Accessories		
	1	set	Supply/Delivery and Installation of Solar-based Submersible Pumping System with Complete Accessories
	5	bag	Cement
	1	cu.m.	Gravel
	1	cu.m	Sand
	5	kgs	RSB
			All equipment/tools to be used and labor requirements will be arranged by the contractor
	M. Water Tank and Pipelines		
	70	Bags	Cement
	250	Kgs	RSB
	5	cu.m.	Gravel
	4	cu.m.	Sand
	90	bd.ft.	Form Lumber
	10	pcs	Plywood
	8	kgs	CW Nails
	5	kgs	Tie Wire
	1	set	Steel Pipelines with accessories
			All equipment/tools to be used and labor requirements will be arranged by the contractor
	N. Earthworks and Levelling for 300sq.m. lot		
			All equipment/tools to be used and labor requirements will be arranged by the contractor
	O. Nursery Supplies and Materials		
	2	pcs	Bolo
	3	pcs	Shovel
	5	pcs	Hand trowel
	1	set	Knapsack Sprayer (16L capacity)
	180	sacks	Dried Rice Hull
	120	sacks	Organic Compost

	120	sacks	Garden Soil
	12,000	pcs	Potting Bags (3x3x10)
	3	pcs	Sprinklers
	3	pcs	Plastic Drum (400L capacity)
	3	pcs	Pails (20L capacity)
	3	pcs	Sinkers
	1	set	Planting materials (mixed) worth 20k
	1	set	Pesticides and Fertilizers worth 20k
			Labor for maintenance will be arranged by the contractor with the PO-partner

<i>Lot Number</i>	<i>Quantity</i>	<i>Unit</i>	<i>Specification</i>
LOT 2	A. Project Signboard		
	32	sq. ft	Tarpaulin (4' x 8')
	27	bd. Ft.	2" x 2" x 8' Good Lumber
	1	Pcs	4' x 8' x 1/4" Marine Plywood
	2	kgs	Assorted CWN
			All equipment/tools to be used and labor requirements will be arranged by the contractor
	B. Structural Steel, GI Pipes		
	30	pcs	2" dia. GI Pipes Sch.40
	12	pcs	1.5" dia GI Pipe Sch.40
	12	pcs	1" dia GI Pipe Sch.40
			All equipment/tools to be used and labor requirements will be arranged by the contractor
	C. Metal Structure Accessories, Steel Plate		
	45	kgs	1/4" x 2" Flat Bar
	9	kgs	Welding Rod
			All equipment/tools to be used and labor requirements will be arranged by the contractor
	D. Metal Structure Accessories, Pipe Clamps		
	48	kgs	1/8" x 2" Flat Bar
			All equipment/tools to be used and labor requirements will be arranged by the contractor
	E. Metal Structure Accessories, Bolts & Nuts with washer		
	31.5	kgs	3/8 Bolts & Nuts with washer
			All equipment/tools to be used and labor requirements will be arranged by the contractor
	F. Steel Plant Rack		
	9	pcs	1" GI Pipe Sch.20
	12	pcs	1" x 1/4" Angular Bar
	14	pcs	2 x 2 x 5mm Steel Matting
	6	kgs	Welding Rod
			All equipment/tools to be used and labor requirements will be arranged by the contractor

G. Sliding Door (Steel Frame)		
1	pc	1" GI Pipe Sch.20
5	pcs	1" x 1/4" Angular Bar
1.8	sq.m.	Insect Net (Mesh 24)
1	kgs	Welding Rod
8	pcs	10mm Roller Bearing
		All equipment/tools to be used and labor requirements will be arranged by the contractor
H. Painting Works, Metal		
1.2	gallon	Red Oxide Primer
3	gallon	Acrylic Paint (white)
3	liter	Paint Thinner
12	lot	Consumables
		All equipment/tools to be used and labor requirements will be arranged by the contractor
I. Roofing and Covering		
35	sq.m.	PE Plastic 200 micron
50	sq.m.	Insect Net (Mesh 24)
50	sq.m.	Net Shade, 30% shading
500	pcs.	1" Tek screw
30	pcs.	1" x 0.5mm x 3m Aluminum C-Channel
45	pcs.	1" x 2m x 2mm Wiggle Wire
		All equipment/tools to be used and labor requirements will be arranged by the contractor
J. Well Drilling		
6	bags	Bentonite Cement
		All equipment/tools to be used and labor requirements will be arranged by the contractor
K. Casing Installation and Well Development		
6	pcs	6" Plain GI Casing
6	pcs	3" Plain GI Riser Pipe
6	pcs	6" Coupling
4	pcs	3" Coupling
2	pcs	6" GI Nipple
2	pcs	3" GI Nipple
2	pcs	3" GI Elbow
2	pcs	Slotted Pipe
2	pcs	6"x6m Sch.40 Deep Well Screen Pipe
2	cu.m.	Pea Gravel
6	pcs	Centralizer
2	can	Solvent Cement
2	pcs	Transition/Adopter Pipe
2	pcs	Guide Shoe
		All equipment/tools to be used and labor requirements will be arranged by the contractor

	L. Supply/Delivery and Installation of Solar-based Submersible Pumping System with Complete Accessories		
	1	set	Supply/Delivery and Installation of Solar-based Submersible Pumping System with Complete Accessories
	5	bag	Cement
	1	cu.m.	Gravel
	1	cu.m	Sand
	5	kgs	RSB
			All equipment/tools to be used and labor requirements will be arranged by the contractor
	M. Water Tank and Pipelines		
	60	Bags	Cement
	250	Kgs	RSB
	5	cu.m.	Gravel
	4	cu.m.	Sand
	90	bd.ft.	Form Lumber
	10	pcs	Plywood
	8	kgs	CW Nails
	5	kgs	Tie Wire
	1	set	Steel Pipelines with accessories
			All equipment/tools to be used and labor requirements will be arranged by the contractor
	N. Earthworks and Levelling for 300sq.m. lot		
			All equipment/tools to be used and labor requirements will be arranged by the contractor
	O. Nursery Supplies and Materials		
	2	pcs	Bolo
	3	pcs	Shovel
	5	pcs	Hand trowel
	1	set	Knapsack Sprayer (16L capacity)
	150	sacks	Dried Rice Hull
	100	sacks	Organic Compost
	100	sacks	Garden Soil
	12,000	pcs	Potting Bags (3x3x10)
	3	pcs	Sprinklers
	3	pcs	Plastic Drum (400L capacity)
	3	pcs	Pails (20L capacity)
	3	pcs	Sinkers
	1	set	Planting materials (mixed) worth 20k
	1	set	Pesticides and Fertilizers worth 20k
			Labor for maintenance will be arranged by the contractor with the PO-partner

Lot Number	Quantity	Unit	Specification
LOT 3	A. Project Signboard		
	32	sq. ft	Tarpaulin (4' x 8')
	27	bd. Ft.	2" x 2" x 8' Good Lumber



	1	Pcs	4' x 8' x 1/4" Marine Plywood
	2	kgs	Assorted CWN
			All equipment/tools to be used and labor requirements will be arranged by the contractor
	B. Structural Steel, GI Pipes		
	35	pcs	2" dia. GI Pipes Sch.40
	12	pcs	1.5" dia GI Pipe Sch.40
	12	pcs	1" dia GI Pipe Sch.40
			All equipment/tools to be used and labor requirements will be arranged by the contractor
	C. Metal Structure Accessories, Steel Plate		
	45	kgs	1/4" x 2" Flat Bar
	9	kgs	Welding Rod
			All equipment/tools to be used and labor requirements will be arranged by the contractor
	D. Metal Structure Accessories, Pipe Clamps		
	54	kgs	1/8" x 2" Flat Bar
			All equipment/tools to be used and labor requirements will be arranged by the contractor
	E. Metal Structure Accessories, Bolts & Nuts with washer		
	38	kgs	3/8 Bolts & Nuts with washer
			All equipment/tools to be used and labor requirements will be arranged by the contractor
	F. Steel Plant Rack		
	9	pcs	1" GI Pipe Sch.20
	15	pcs	1" x 1/4" Angular Bar
	14	pcs	2 x 2 x 5mm Steel Matting
	6	kgs	Welding Rod
			All equipment/tools to be used and labor requirements will be arranged by the contractor
	G. Sliding Door (Steel Frame)		
	1	pc	1" GI Pipe Sch.20
	5	pcs	1" x 1/4" Angular Bar
	1.8	sq.m.	Insect Net (Mesh 24)
	1	kgs	Welding Rod
	8	pcs	10mm Roller Bearing
			All equipment/tools to be used and labor requirements will be arranged by the contractor
	H. Painting Works, Metal		
	1.2	gallon	Red Oxide Primer
	3	gallon	Acrylic Paint (white)
	3	liter	Paint Thinner
	12	unit	Consumables

		All equipment/tools to be used and labor requirements will be arranged by the contractor
I. Roofing and Covering		
40	sq.m.	PE Plastic 200 micron
50	sq.m.	Insect Net (Mesh 24)
50	sq.m.	Net Shade, 30% shading
500	pcs.	1" Tek screw
30	pcs.	1" x 0.5mm x 3m Aluminum C-Channel
45	pcs.	1" x 2m x 2mm Wiggle Wire
		All equipment/tools to be used and labor requirements will be arranged by the contractor
J. Well Drilling		
8	bags	Bentonite Cement
		All equipment/tools to be used and labor requirements will be arranged by the contractor
K. Casing Installation and Well Development		
6	pcs	6" Plain GI Casing
6	pcs	3" Plain GI Riser Pipe
6	pcs	6" Coupling
4	pcs	3" Coupling
2	pcs	6" GI Nipple
2	pcs	3" GI Nipple
2	pcs	3" GI Elbow
2	pcs	Slotted Pipe
2	pcs	6"x6m Sch.40 Deep Well Screen Pipe
2	cu.m.	Pea Gravel
6	pcs	Centralizer
2	can	Solvent Cement
2	pcs	Transition/Adopter Pipe
2	pcs	Guide Shoe
		All equipment/tools to be used and labor requirements will be arranged by the contractor
L. Supply/Delivery and Installation of Submersible Pumping System with Complete Accessories		
1	set	Supply/Delivery and Installation of Submersible Pumping System with Complete Accessories
5	bag	Cement
1	cu.m.	Gravel
1	cu.m	Sand
5	kgs	RSB
		All equipment/tools to be used and labor requirements will be arranged by the contractor
M. Water Tank and Pipelines		
70	Bags	Cement
250	Kgs	RSB

	5	cu.m.	Gravel
	4	cu.m.	Sand
	80	bd.ft.	Form Lumber
	10	pcs	Plywood
	8	kgs	CW Nails
	5	kgs	Tie Wire
	1	set	GI Pipelines with accessories
			All equipment/tools to be used and labor requirements will be arranged by the contractor
	N. Earthworks and Levelling for 300sq.m. lot		
			All equipment/tools to be used and labor requirements will be arranged by the contractor
	O. Nursery Supplies and Materials		
	2	pcs	Bolo
	3	pcs	Shovel
	5	pcs	Hand trowel
	1	set	Knapsack Sprayer (16L capacity)
	175	sacks	Dried Rice Hull
	120	sacks	Organic Compost
	120	sacks	Garden Soil
	15,000	pcs	Potting Bags (3x3x10)
	3	pcs	Sprinklers
	3	pcs	Plastic Drum (400L capacity)
	3	pcs	Pails (20L capacity)
	3	pcs	Sinkers
	1	set	Planting materials (mixed) worth 20k
	1	set	Pesticides and Fertilizers worth 20k
			Labor for maintenance will be arranged by the contractor with the PO-partner

<i>Lot Number</i>	<i>Quantity</i>	<i>Unit</i>	<i>Specification</i>
LOT 4	A. Project Signboard		
	32	sq. ft	Tarpaulin (4' x 8')
	27	bd. Ft.	2" x 2" x 8' Good Lumber
	1	Pcs	4' x 8' x 1/4" Marine Plywood
	2	kgs	Assorted CWN
			All equipment/tools to be used and labor requirements will be arranged by the contractor
	B. Structural Steel, GI Pipes		
	35	pcs	2" dia. GI Pipes Sch.40
	12	pcs	1.5"dia GI Pipe Sch.40
	12	pcs	1"dia GI Pipe Sch.40
			All equipment/tools to be used and labor requirements will be arranged by the contractor
	C. Metal Structure Accessories, Steel Plate		
	25	kgs	1/4" x 2" Flat Bar
	2.5	kgs	Welding Rod

		All equipment/tools to be used and labor requirements will be arranged by the contractor
D. Metal Structure Accessories, Pipe Clamps		
35	kgs	1/8" x 2" Flat Bar
		All equipment/tools to be used and labor requirements will be arranged by the contractor
E. Metal Structure Accessories, Bolts & Nuts with washer		
27	kgs	3/8 Bolts & Nuts with washer
		All equipment/tools to be used and labor requirements will be arranged by the contractor
F. Steel Plant Rack		
9	pcs	1" GI Pipe Sch.20
11	pcs	1" x 1/4" Angular Bar
7	pcs	2 x 2 x 5mm Steel Matting
6	kgs	Welding Rod
		All equipment/tools to be used and labor requirements will be arranged by the contractor
G. Sliding Door (Steel Frame)		
1	pc	1" GI Pipe Sch.20
2	pcs	1" x 1/4" Angular Bar
1.8	sq.m.	Insect Net (Mesh 24)
1	kgs	Welding Rod
8	pcs	10mm Roller Bearing
		All equipment/tools to be used and labor requirements will be arranged by the contractor
H. Painting Works, Metal		
4	gallon	Red Oxide Primer
4	gallon	Acrylic Paint (white)
2	liter	Paint Thinner
8	unit	Consumables
		All equipment/tools to be used and labor requirements will be arranged by the contractor
I. Roofing and Covering		
35	sq.m.	PE Plastic 200 micron
40	sq.m.	Insect Net (Mesh 24)
50	sq.m.	Net Shade, 30% shading
500	pcs.	1" Tek screw
30	pcs.	1" x 0.5mm x 3m Aluminum C-Channel
35	pcs.	1" x 2m x 2mm Wiggle Wire
		All equipment/tools to be used and labor requirements will be arranged by the contractor
J. Supply/Delivery and Installation of Submersible Pumping System with Complete Accessories		

	1	set	Supply/Delivery and Installation of Submersible Pumping System with Complete Accessories
	3	bag	Cement
	0.5	cu.m.	Gravel
	0.5	cu.m	Sand
			All equipment/tools to be used and labor requirements will be arranged by the contractor
	K. Water Tank and Pipelines		
	48	Bags	Cement
	200	Kgs	RSB
	4	cu.m.	Gravel
	3	cu.m.	Sand
	75	bd.ft.	Form Lumber
	3	pcs	Plywood
	6	kgs	CW Nails
	4	kgs	Tie Wire
	1	set	GI Pipelines with accessories
			All equipment/tools to be used and labor requirements will be arranged by the contractor
	L. Earthworks and Levelling for 300sq.m. lot		
			All equipment/tools to be used and labor requirements will be arranged by the contractor
	M. Nursery Supplies and Materials		
	2	pcs	Bolo
	3	pcs	Shovel
	5	pcs	Hand trowel
	1	set	Knapsack Sprayer (16L capacity)
	110	sacks	Dried Rice Hull
	90	sacks	Organic Compost
	90	sacks	Garden Soil
	10,000	pcs	Potting Bags (3x3x10)
	3	pcs	Sprinklers
	2	pcs	Plastic Drum (400L capacity)
	3	pcs	Pails (20L capacity)
	3	pcs	Sinkers
	1	set	Planting materials (worth 20k)
	1	set	Pesticides and Fertilizers (worth 20k)
			Labor for maintenance will be arranged by the contractor with the PO-partner

Lot Number	Quantity	Unit	Specification
LOT 5	A. Project Signboard		
	32	sq. ft	Tarpaulin (4' x 8')
	27	bd. Ft.	2" x 2" x 8' Good Lumber
	1	Pcs	4' x 8' x 1/4" Marine Plywood
	2	kgs	Assorted CWN

		All equipment/tools to be used and labor requirements will be arranged by the contractor
B. Structural Steel, GI Pipes		
35	pcs	2" dia. GI Pipes Sch.40
12	pcs	1.5" dia GI Pipe Sch.40
12	pcs	1" dia GI Pipe Sch.40
		All equipment/tools to be used and labor requirements will be arranged by the contractor
C. Metal Structure Accessories, Steel Plate		
25	kgs	1/4" x 2" Flat Bar
2.5	kgs	Welding Rod (ordinary)
		All equipment/tools to be used and labor requirements will be arranged by the contractor
D. Metal Structure Accessories, Pipe Clamps		
35	kgs	1/8" x 2" Flat Bar
		All equipment/tools to be used and labor requirements will be arranged by the contractor
E. Metal Structure Accessories, Bolts & Nuts with washer		
31.5	kgs	3/8 Bolts & Nuts with washer
		All equipment/tools to be used and labor requirements will be arranged by the contractor
F. Steel Plant Rack		
9	pcs	1" GI Pipe Sch.20
11	pcs	1" x 1/4" Angular Bar
7	pcs	2 x 2 x 5mm Steel Matting
6	kgs	Welding Rod
		All equipment/tools to be used and labor requirements will be arranged by the contractor
G. Sliding Door (Steel Frame)		
1	pc	1" GI Pipe Sch.20
2	pcs	1" x 1/4" Angular Bar
1.8	sq.m.	Insect Net (Mesh 24)
1	kgs	Welding Rod
8	pcs	10mm Roller Bearing
		All equipment/tools to be used and labor requirements will be arranged by the contractor
H. Painting Works, Metal		
1	gallon	Red Oxide Primer
1	gallon	Acrylic Paint (white)
2	liter	Paint Thinner
8	unit	Consumables
		All equipment/tools to be used and labor requirements will be arranged by the contractor
I. Roofing and Covering		
30	sq.m.	PE Plastic 200 micron
45	sq.m.	Insect Net (Mesh 24)
45	sq.m.	Net Shade, 30% shading
500	pcs.	1" Tek screw
30	pcs.	1" x 0.5mm x 3m Aluminum C-Channel
45	pcs.	1" x 2m x 2mm Wiggle Wire

			All equipment/tools to be used and labor requirements will be arranged by the contractor
	J. Supply/Delivery and Installation of Submersible Pumping System with Complete Accessories		
	1	set	Supply/Delivery and Installation of Submersible Pumping System with Complete Accessories
	3	bag	Cement
	0.5	cu.m.	Gravel
	0.5	cu.m	Sand
			All equipment/tools to be used and labor requirements will be arranged by the contractor
	K. Water Tank and Pipelines		
	55	Bags	Cement
	200	Kgs	RSB
	4	cu.m.	Gravel
	3	cu.m.	Sand
	75	bd.ft.	Form Lumber
	3	pcs	Plywood
	6	kgs	CW Nails
	4	kgs	Tie Wire
	1	set	GI Pipelines with accessories
			All equipment/tools to be used and labor requirements will be arranged by the contractor
	L. Earthworks and Levelling for 300sq.m. lot		
			All equipment/tools to be used and labor requirements will be arranged by the contractor
	M. Nursery Supplies and Materials		
	2	pcs	Bolo
	3	pcs	Shovel
	5	pcs	Hand trowel
	1	set	Knapsack Sprayer (16L capacity)
	130	sacks	Dried Rice Hull
	95	sacks	Organic Compost
	95	sacks	Garden Soil
	10,000	pcs	Potting Bags (3x3x10)
	3	pcs	Sprinklers
	2	pcs	Plastic Drum (400L capacity)
	3	pcs	Pails (20L capacity)
	3	pcs	Sinkers
	1	set	Planting materials (mixed)
	1	set	Pesticides and Fertilizers
			Labor for maintenance will be arranged by the contractor with the PO-partner

<i>Lot Number</i>	<i>Quantity</i>	<i>Unit</i>	<i>Specification</i>
LOT 6	A. Project Signboard		
	32	sq. ft	Tarpaulin (4' x 8')
	27	bd. Ft.	2" x 2" x 8' Good Lumber
	1	Pcs	4' x 8' x 1/4" Marine Plywood
	2	kgs	Assorted CWN

		All equipment/tools to be used and labor requirements will be arranged by the contractor
B. Structural Steel, GI Pipes		
35	pcs	2" dia. GI Pipes Sch.40
12	pcs	1.5" dia GI Pipe Sch.40
12	pcs	1" dia GI Pipe Sch.40
		All equipment/tools to be used and labor requirements will be arranged by the contractor
C. Metal Structure Accessories, Steel Plate		
25	kgs	1/4" x 2" Flat Bar
2.5	kgs	Welding Rod
		All equipment/tools to be used and labor requirements will be arranged by the contractor
D. Metal Structure Accessories, Pipe Clamps		
35	kgs	1/8" x 2" Flat Bar
		All equipment/tools to be used and labor requirements will be arranged by the contractor
E. Metal Structure Accessories, Bolts & Nuts with washer		
27	kgs	3/8 Bolts & Nuts with washer
		All equipment/tools to be used and labor requirements will be arranged by the contractor
F. Steel Plant Rack		
9	pcs	1" GI Pipe Sch.20
11	pcs	1" x 1/4" Angular Bar
7	pcs	2 x 2 x 5mm Steel Matting
6	kgs	Welding Rod
		All equipment/tools to be used and labor requirements will be arranged by the contractor
G. Sliding Door (Steel Frame)		
1	pc	1" GI Pipe Sch.20
2	pcs	1" x 1/4" Angular Bar
1.8	sq.m.	Insect Net (Mesh 24)
1	kgs	Welding Rod
8	pcs	10mm Roller Bearing
		All equipment/tools to be used and labor requirements will be arranged by the contractor
H. Painting Works, Metal		
0.5	gallon	Red Oxide Primer
1	gallon	Acrylic Paint (white)
2	liter	Paint Thinner
8	unit	Consumables
		All equipment/tools to be used and labor requirements will be arranged by the contractor
I. Roofing and Covering		
40	sq.m.	PE Plastic 200 micron
50	sq.m.	Insect Net (Mesh 24)
45	sq.m.	Net Shade, 30% shading
500	pcs.	1" Tek screw
30	pcs.	1" x 0.5mm x 3m Aluminum C-Channel
40	pcs.	1" x 2m x 2mm Wiggle Wire



			All equipment/tools to be used and labor requirements will be arranged by the contractor
	J. Supply/Delivery and Installation of Submersible Pumping System with Complete Accessories		
	1	set	Supply/Delivery and Installation of Submersible Pumping System with Complete Accessories
	3	bag	Cement
	0.5	cu.m.	Gravel
	0.5	cu.m	Sand
			All equipment/tools to be used and labor requirements will be arranged by the contractor
	K. Water Tank and Pipelines		
	40	Bags	Cement
	220	Kgs	RSB
	4	cu.m.	Gravel
	3	cu.m.	Sand
	75	bd.ft.	Form Lumber
	3	pcs	Plywood
	6	kgs	CW Nails
	4	kgs	Tie Wire
	1	set	GI Pipelines with accessories
			All equipment/tools to be used and labor requirements will be arranged by the contractor
	L. Earthworks and Levelling for 300sq.m. lot		
			All equipment/tools to be used and labor requirements will be arranged by the contractor
	M. Nursery Supplies and Materials		
	2	pcs	Bolo
	3	pcs	Shovel
	5	pcs	Hand trowel
	1	set	Knapsack Sprayer (16L capacity)
	150	sacks	Dried Rice Hull
	90	sacks	Organic Compost
	90	sacks	Garden Soil
	10,000	pcs	Potting Bags (3x3x10)
	3	pcs	Sprinklers
	2	pcs	Plastic Drum (400L capacity)
	3	pcs	Pails (20L capacity)
	3	pcs	Sinkers
	1	set	Planting materials (mixed) worth 20k
	1	set	Pesticides and Fertilizers worth 20k
			Labor for maintenance will be arranged by the contractor with the PO-partner

<i>Lot Number</i>	<i>Quantity</i>	<i>Unit</i>	<i>Specification</i>
LOT 7	A. Project Signboard		
	32	sq. ft	Tarpaulin (4' x 8')
	27	bd. Ft.	2" x 2" x 8' Good Lumber
	1	Pcs	4' x 8' x 1/4" Marine Plywood
	2	kgs	Assorted CWN

		All equipment/tools to be used and labor requirements will be arranged by the contractor
B. Structural Steel, GI Pipes		
35	pcs	2" dia. GI Pipes Sch.40
12	pcs	1.5" dia GI Pipe Sch.40
12	pcs	1" dia GI Pipe Sch.40
		All equipment/tools to be used and labor requirements will be arranged by the contractor
C. Metal Structure Accessories, Steel Plate		
25	kgs	1/4" x 2" Flat Bar
2.5	kgs	Welding Rod
		All equipment/tools to be used and labor requirements will be arranged by the contractor
D. Metal Structure Accessories, Pipe Clamps		
35	kgs	1/8" x 2" Flat Bar
		All equipment/tools to be used and labor requirements will be arranged by the contractor
E. Metal Structure Accessories, Bolts & Nuts with washer		
27	kgs	3/8 Bolts & Nuts with washer
		All equipment/tools to be used and labor requirements will be arranged by the contractor
F. Steel Plant Rack		
8	pcs	1" GI Pipe Sch.20
10	pcs	1" x 1/4" Angular Bar
7	pcs	2 x 2 x 5mm Steel Matting
6	kgs	Welding Rod
		All equipment/tools to be used and labor requirements will be arranged by the contractor
G. Sliding Door (Steel Frame)		
1	pc	1" GI Pipe Sch.20
2	pcs	1" x 1/4" Angular Bar
1.8	sq.m.	Insect Net (Mesh 24)
1	kgs	Welding Rod
8	pcs	10mm Roller Bearing
		All equipment/tools to be used and labor requirements will be arranged by the contractor
H. Painting Works, Metal		
0.5	gallon	Red Oxide Primer
1	gallon	Acrylic Paint (white)
2	liter	Paint Thinner
8	lot	Consumables
		All equipment/tools to be used and labor requirements will be arranged by the contractor
I. Roofing and Covering		
30	sq.m.	PE Plastic 200 micron
40	sq.m.	Insect Net (Mesh 24)
40	sq.m.	Net Shade, 30% shading
500	pcs.	1" Tek screw
30	pcs.	1" x 0.5mm x 3m Aluminum C-Channel
35	pcs.	1" x 2m x 2mm Wiggle Wire

			All equipment/tools to be used and labor requirements will be arranged by the contractor
	J. Supply/Delivery and Installation of Submersible Pumping System with Complete Accessories		
	1	set	Supply/Delivery and Installation of Submersible Pumping System with Complete Accessories
	5	bag	Cement
	0.5	cu.m.	Gravel
	0.5	cu.m	Sand
			All equipment/tools to be used and labor requirements will be arranged by the contractor
	K. Water Tank and Pipelines		
	45	Bags	Cement
	210	Kgs	RSB
	4	cu.m.	Gravel
	3	cu.m.	Sand
	75	bd.ft.	Form Lumber
	3	pcs	Plywood
	6	kgs	CW Nails
	4	kgs	Tie Wire
	1	set	GI Pipelines with accessories
			All equipment/tools to be used and labor requirements will be arranged by the contractor
	L. Earthworks and Levelling for 300sq.m. lot		
			All equipment/tools to be used and labor requirements will be arranged by the contractor
	M. Nursery Supplies and Materials		
	2	pcs	Bolo
	3	pcs	Shovel
	5	pcs	Hand trowel
	1	set	Knapsack Sprayer (16L capacity)
	120	sacks	Dried Rice Hull
	90	sacks	Organic Compost
	90	sacks	Garden Soil
	10,000	pcs	Potting Bags (3x3x10)
	3	pcs	Sprinklers
	2	pcs	Plastic Drum (400L capacity)
	3	pcs	Pails (20L capacity)
	3	pcs	Sinkers
	1	set	Planting materials (mixed) worth 20k
	1	set	Pesticides and Fertilizers worth 20k
			Labor for maintenance shall be arranged by the contractor with the PO-partner

<i>Lot Number</i>	<i>Quantity</i>	<i>Unit</i>	<i>Specification</i>
LOT 8	A. Project Signboard		
	32	sq. ft	Tarpaulin (4' x 8')
	27	bd. Ft.	2" x 2" x 8' Good Lumber
	1	Pcs	4' x 8' x 1/4" Marine Plywood
	2	kgs	Assorted CWN

		All equipment/tools to be used and labor requirements will be arranged by the contractor
B. Structural Steel, GI Pipes		
4	pcs	2" dia. GI Pipes Sch.40
2	pcs	1.5" dia GI Pipe Sch.40
2	pcs	1" dia GI Pipe Sch.40
		All equipment/tools to be used and labor requirements will be arranged by the contractor
C. Metal Structure Accessories, Steel Plate		
5	kgs	1/4" x 2" Flat Bar
1	kgs	Welding Rod
		All equipment/tools to be used and labor requirements will be arranged by the contractor
D. Metal Structure Accessories, Pipe Clamps		
10	kgs	1/8" x 2" Flat Bar
		All equipment/tools to be used and labor requirements will be arranged by the contractor
E. Metal Structure Accessories, Bolts & Nuts with washer		
5	kgs	3/8 Bolts & Nuts with washer
		All equipment/tools to be used and labor requirements will be arranged by the contractor
F. Steel Plant Rack		
4	pcs	1" GI Pipe Sch.20
5	pcs	1" x 1/4" Angular Bar
5	pcs	2 x 2 x 5mm Steel Matting
4	kgs	Welding Rod
		All equipment/tools to be used and labor requirements will be arranged by the contractor
G. Sliding Door (Steel Frame)		
1	pc	1" GI Pipe Sch.20
2	pcs	1" x 1/4" Angular Bar
1.8	sq.m.	Insect Net (Mesh 24)
1	kgs	Welding Rod
8	pcs	10mm Roller Bearing
		All equipment/tools to be used and labor requirements will be arranged by the contractor
H. Painting Works, Metal		
0.5	gallon	Red Oxide Primer
1	gallon	Acrylic Paint (white)
2	liter	Paint Thinner
8	lot	Consumables
		All equipment/tools to be used and labor requirements will be arranged by the contractor
I. Roofing and Covering		
25	sq.m.	PE Plastic 200 micron
40	sq.m.	Insect Net (Mesh 24)
40	sq.m.	Net Shade, 30% shading
500	pcs.	1" Tek screw
30	pcs.	1" x 0.5mm x 3m Aluminum C-Channel
25	pcs.	1" x 2m x 2mm Wiggle Wire

		All equipment/tools to be used and labor requirements will be arranged by the contractor
J. Well Drilling and Development		
4	bags	Bentonite Cement
		All equipment/tools to be used and labor requirements will be arranged by the contractor
K. Casing Installation and Well Development		
5	pcs	6" Plain GI Casing
5	pcs	3" Plain GI Riser Pipe
6	pcs	6" Coupling
4	pcs	3" Coupling
1	pcs	6" GI Nipple
1	pcs	3" GI Nipple
1	pcs	3" GI Elbow
1	pcs	Slotted Pipe
1	pcs	6"x6m Sch.40 Deep Well Screen Pipe
1	cu.m.	Pea Gravel
6	pcs	Centralizer
1	can	Solvent Cement
1	pcs	Transition/Adopter Pipe
1	pcs	Guide Shoe
		All equipment/tools to be used and labor requirements will be arranged by the contractor
L. Supply/Delivery and Installation of Submersible Pumping System with Complete Accessories		
1	set	Supply/Delivery and Installation of Submersible Pumping System with Complete Accessories
3	bag	Cement
0.5	cu.m.	Gravel
0.5	cu.m	Sand
		All equipment/tools to be used and labor requirements will be arranged by the contractor
M. Water Tank and Pipelines		
35	Bags	Cement
180	Kgs	RSB
4	cu.m.	Gravel
2	cu.m.	Sand
75	bd.ft.	Form Lumber
3	pcs	Plywood
6	kgs	CW Nails
4	kgs	Tie Wire
1	set	GI Pipelines with accessories
		All equipment/tools to be used and labor requirements will be arranged by the contractor
N. Earthworks and Levelling for 300sq.m. lot		
		All equipment/tools to be used and labor requirements will be arranged by the contractor
O. Nursery Supplies and Materials		
2	pcs	Bolo
3	pcs	Shovel
5	pcs	Hand trowel

	1	set	Knapsack Sprayer (16L capacity)
	120	sacks	Dried Rice Hull
	95	sacks	Organic Compost
	95	sacks	Garden Soil
	10,000	pcs	Potting Bags (3x3x10)
	3	pcs	Sprinklers
	2	pcs	Plastic Drum (400L capacity)
	3	pcs	Pails (20L capacity)
	3	pcs	Sinkers
	1	set	Planting materials (mixed) worth 20k
	1	set	Pesticides and Fertilizers worth 20k
			Labor for maintenance shall be arranged by the contractor with the PO-partner

<i>Lot Number</i>	<i>Quantity</i>	<i>Unit</i>	<i>Specification</i>
LOT 9	A. Project Signboard		
	32	sq. ft	Tarpaulin (4' x 8')
	27	bd. Ft.	2" x 2" x 8' Good Lumber
	1	Pcs	4' x 8' x 1/4" Marine Plywood
	2	kgs	Assorted CWN
			All equipment/tools to be used and labor requirements will be arranged by the contractor
	B. Structural Steel, GI Pipes		
	35	pcs	2" dia. GI Pipes Sch.40
	12	pcs	1.5" dia GI Pipe Sch.40
	12	pcs	1" dia GI Pipe Sch.40
			All equipment/tools to be used and labor requirements will be arranged by the contractor
	C. Metal Structure Accessories, Steel Plate		
	25	kgs	1/4" x 2" Flat Bar
	2.5	kgs	Welding Rod (ordinary)
			All equipment/tools to be used and labor requirements will be arranged by the contractor
	D. Metal Structure Accessories, Pipe Clamps		
	35	kgs	1/8" x 2" Flat Bar
			All equipment/tools to be used and labor requirements will be arranged by the contractor
	E. Metal Structure Accessories, Bolts & Nuts with washer		
	27	kgs	3/8 Bolts & Nuts with washer
			All equipment/tools to be used and labor requirements will be arranged by the contractor
	F. Steel Plant Rack		
	9	pcs	1" GI Pipe Sch.20
	11	pcs	1" x 1/4" Angular Bar
	7	pcs	2 x 2 x 5mm Steel Matting
	6	kgs	Welding Rod
			All equipment/tools to be used and labor requirements will be arranged by the contractor
	G. Sliding Door (Steel Frame)		
	1	pc	1" GI Pipe Sch.20
	2	pcs	1" x 1/4" Angular Bar

	1.8	sq.m.	Insect Net (Mesh 24)
	1	kgs	Welding Rod
	8	pcs	10mm Roller Bearing
			All equipment/tools to be used and labor requirements will be arranged by the contractor
	H. Painting Works, Metal		
	0.5	gallon	Red Oxide Primer
	1	gallon	Acrylic Paint (white)
	2	liter	Paint Thinner
	8	lot	Consumables
			All equipment/tools to be used and labor requirements will be arranged by the contractor
	I. Roofing and Covering		
	40	sq.m.	PE Plastic 200 micron
	50	sq.m.	Insect Net (Mesh 24)
	45	sq.m.	Net Shade, 30% shading
	500	pcs.	1" Tek screw
	30	pcs.	1" x 0.5mm x 3m Aluminum C-Channel
	40	pcs.	1" x 2m x 2mm Wiggle Wire
			All equipment/tools to be used and labor requirements will be arranged by the contractor
	J. Supply/Delivery and Installation of Submersible Pumping System with Complete Accessories		
	1	set	Supply/Delivery and Installation of Submersible Pumping System with Complete Accessories
	6	bag	Cement
	1	cu.m.	Gravel
	1	cu.m	Sand
			All equipment/tools to be used and labor requirements will be arranged by the contractor
	K. Water Tank and Pipelines		
	54	Bags	Cement
	220	Kgs	RSB
	5	cu.m.	Gravel
	4	cu.m.	Sand
	75	bd.ft.	Form Lumber
	4	pcs	Plywood
	6	kgs	CW Nails
	4	kgs	Tie Wire
	1	set	GI Pipelines with accessories
			All equipment/tools to be used and labor requirements will be arranged by the contractor
	L. Earthworks and Levelling for 300sq.m. lot		
			All equipment/tools to be used and labor requirements will be arranged by the contractor
	M. Nursery Supplies and Materials		
	3	pcs	Bolo
	3	pcs	Shovel
	5	pcs	Hand trowel
	2	set	Knapsack Sprayer (16L capacity)
	200	sacks	Dried Rice Hull

	120	sacks	Organic Compost
	120	sacks	Garden Soil
	10,000	pcs	Potting Bags (3x3x10)
	5	pcs	Sprinklers
	5	pcs	Plastic Drum (400L capacity)
	5	pcs	Pails (20L capacity)
	5	pcs	Sinkers
	1	set	Planting materials (mixed) worth 20k
	1	set	Pesticides and Fertilizers worth 20k
			Labor for maintenance shall be arranged by the contractor to the PO-partner

<i>Lot Number</i>	<i>Quantity</i>	<i>Unit</i>	<i>Specification</i>
LOT 10	A. Project Signboard		
	32	sq. ft	Tarpaulin (4' x 8')
	27	bd. Ft.	2" x 2" x 8' Good Lumber
	1	Pcs	4' x 8' x 1/4" Marine Plywood
	2	kgs	Assorted CWN
			All equipment/tools to be used and labor requirements will be arranged by the contractor
	B. Structural Steel, GI Pipes		
	35	pcs	2" dia. GI Pipes Sch.40
	12	pcs	1.5" dia GI Pipe Sch.40
	12	pcs	1" dia GI Pipe Sch.40
			All equipment/tools to be used and labor requirements will be arranged by the contractor
	C. Metal Structure Accessories, Steel Plate		
	25	kgs	1/4" x 2" Flat Bar
	2.5	kgs	Welding Rod (ordinary)
			All equipment/tools to be used and labor requirements will be arranged by the contractor
	D. Metal Structure Accessories, Pipe Clamps		
	35	kgs	1/8" x 2" Flat Bar
			All equipment/tools to be used and labor requirements will be arranged by the contractor
	E. Metal Structure Accessories, Bolts & Nuts with washer		
	27	kgs	3/8 Bolts & Nuts with washer
			All equipment/tools to be used and labor requirements will be arranged by the contractor
	F. Steel Plant Rack		
	9	pcs	1" GI Pipe Sch.20
	11	pcs	1" x 1/4" Angular Bar
	7	pcs	2 x 2 x 5mm Steel Matting
	6	kgs	Welding Rod
			All equipment/tools to be used and labor requirements will be arranged by the contractor
	G. Sliding Door (Steel Frame)		
	1	pc	1" GI Pipe Sch.20
	2	pcs	1" x 1/4" Angular Bar
	1.8	sq.m.	Insect Net (Mesh 24)
	1	kgs	Welding Rod



8	pcs	10mm Roller Bearing
		All equipment/tools to be used and labor requirements will be arranged by the contractor
H. Painting Works, Metal		
0.5	gallon	Red Oxide Primer
1	gallon	Acrylic Paint (white)
2	liter	Paint Thinner
8	lot	Consumables
		All equipment/tools to be used and labor requirements will be arranged by the contractor
I. Roofing and Covering		
40	sq.m.	PE Plastic 200 micron
50	sq.m.	Insect Net (Mesh 24)
45	sq.m.	Net Shade, 30% shading
500	pcs.	1" Tek screw
30	pcs.	1" x 0.5mm x 3m Aluminum C-Channel
40	pcs.	1" x 2m x 2mm Wiggle Wire
		All equipment/tools to be used and labor requirements will be arranged by the contractor
J. Supply/Delivery and Installation of Submersible Pumping System with Complete Accessories		
1	set	Supply/Delivery and Installation of Submersible Pumping System with Complete Accessories
6	bag	Cement
1	cu.m.	Gravel
1	cu.m	Sand
		All equipment/tools to be used and labor requirements will be arranged by the contractor
K. Water Tank and Pipelines		
54	Bags	Cement
220	Kgs	RSB
5	cu.m.	Gravel
4	cu.m.	Sand
75	bd.ft.	Form Lumber
4	pcs	Plywood
6	kgs	CW Nails
4	kgs	Tie Wire
1	set	GI Pipelines with accessories
		All equipment/tools to be used and labor requirements will be arranged by the contractor
L. Earthworks and Levelling for 300sq.m. lot		
		All equipment/tools to be used and labor requirements will be arranged by the contractor
M. Nursery Supplies and Materials		
3	pcs	Bolo
3	pcs	Shovel
5	pcs	Hand trowel
2	set	Knapsack Sprayer (16L capacity)
200	sacks	Dried Rice Hull
120	sacks	Organic Compost
120	sacks	Garden Soil

	10,000	pcs	Potting Bags (3x3x10)
	5	pcs	Sprinklers
	5	pcs	Plastic Drum (320L capacity)
	5	pcs	Pails (16L capacity)
	5	pcs	Sinkers
	1	set	Planting materials (mixed) worth 20k
	1	set	Pesticides and Fertilizers worth 20k
			Labor for maintenance will be arranged by the contractor with the PO-partner



OFFICE OF THE PRESIDENTIAL ADVISER  
ON PEACE, RECONCILIATION,  
AND UNITY

## DETAILED ENGINEERING PLAN

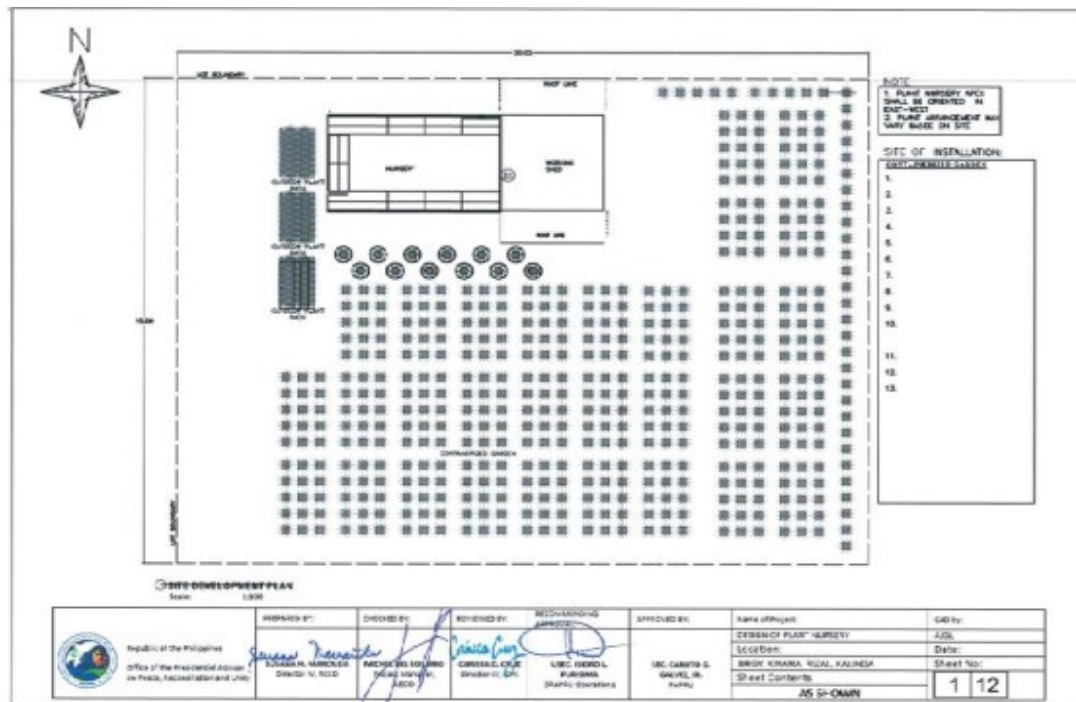
### Design of Plant Nursery

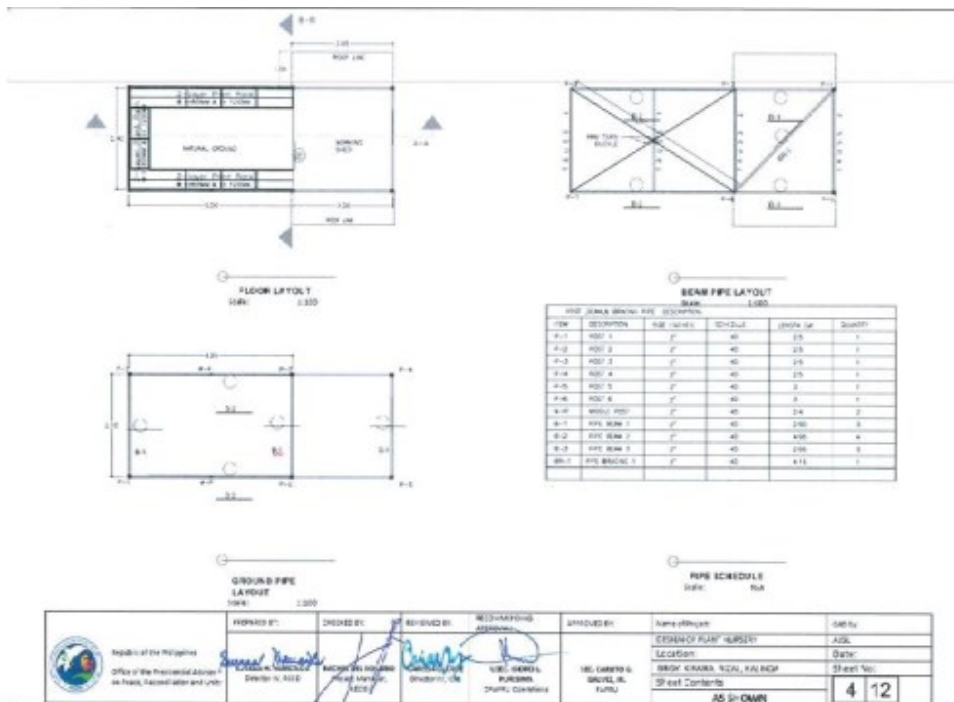


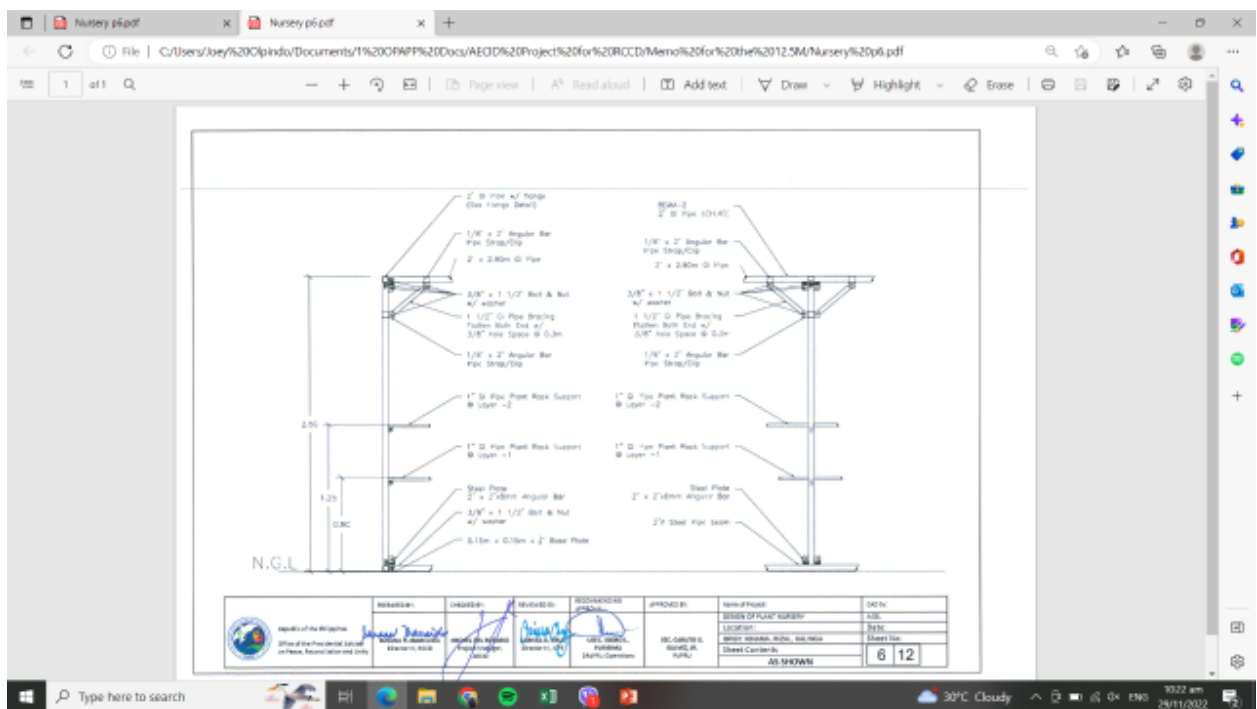
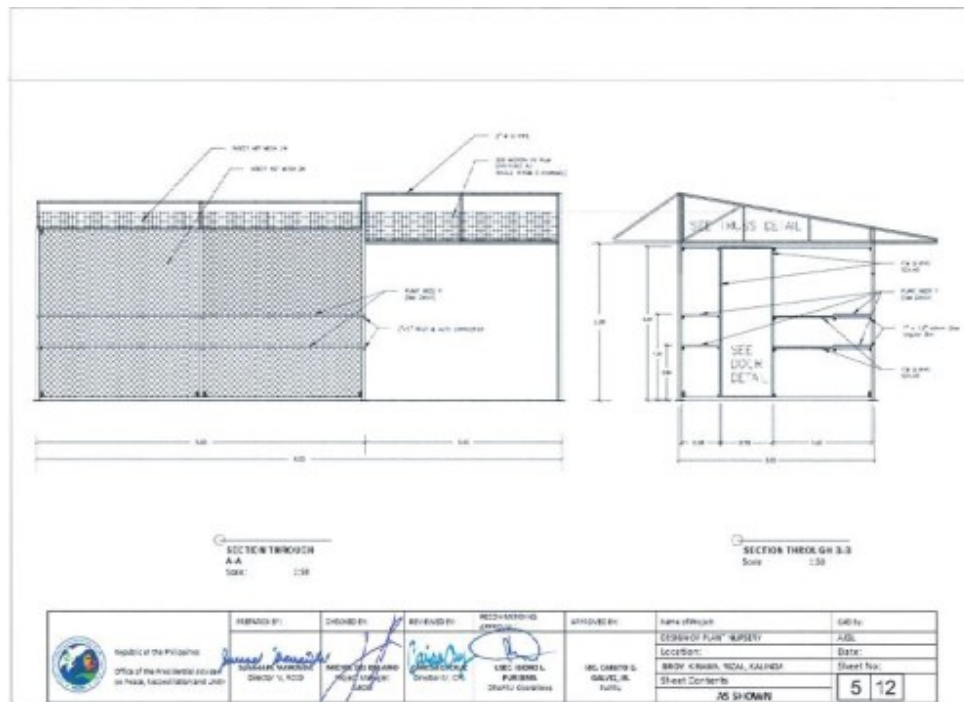
LOCATION MAP

BARANGAY	KUNAMA
CITY/MUNICIPALITY	IGDAL, KALINGA
COORDINATES	
LONGITUDE	
ALTITUDE	





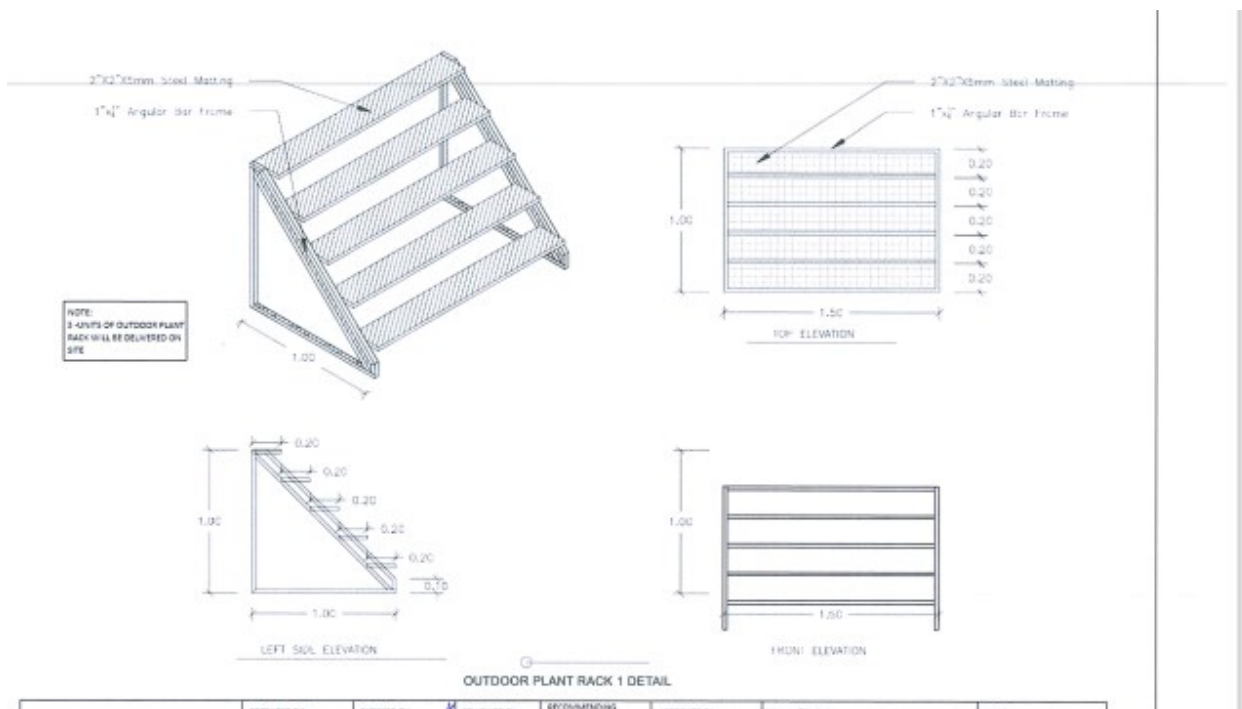
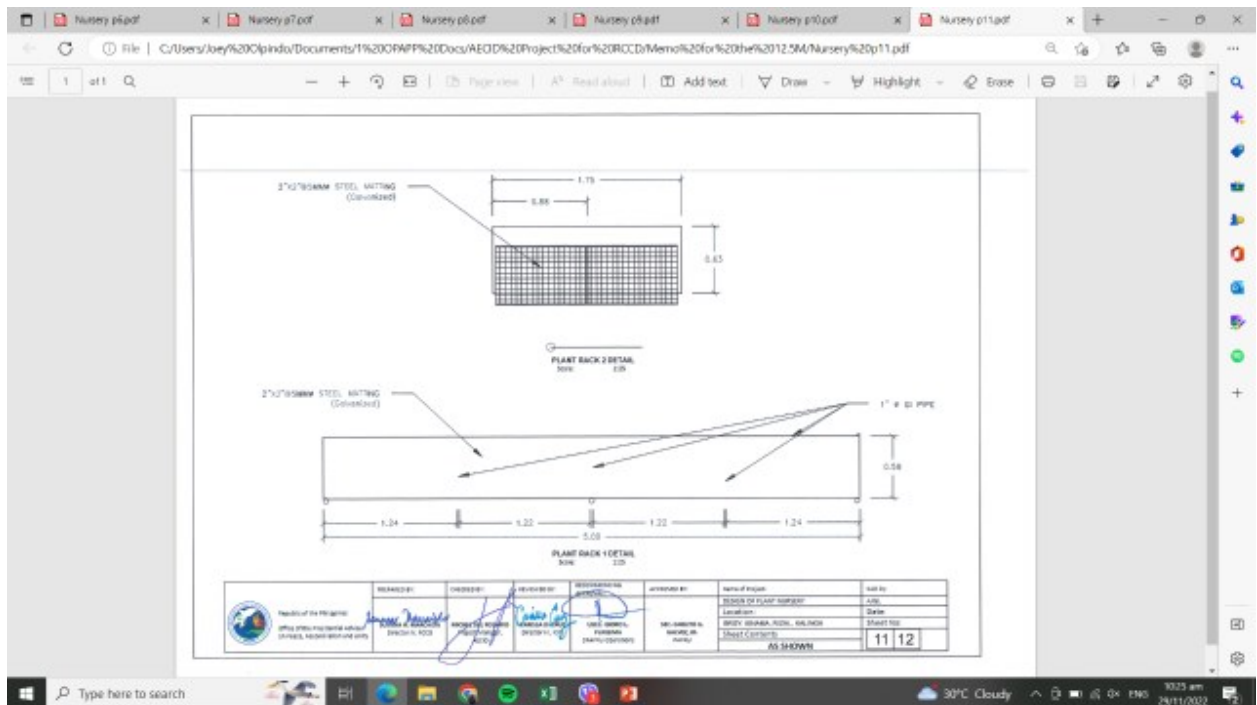












## D. PLACES OF DELIVERY

- Lot 1 – Sitio New Bangad, Brgy. Nambaran, City of Tabuk
- Lot 2 – Brgy. Kinama, Rizal, Kalinga
- Lot 3 – Sitio Ileb, Brgy. Nambaran, City of Tabuk
- Lot 4 – Brgy. Basao, Tinglayan, Kalinga
- Lot 5 – Brgy. Sumadel, Tinglayan, Kalinga
- Lot 6 – Brgy. Gohang, Banaue, Ifugao
- Lot 7 – Brgy. Marcela, Sta. Marcela, Apayao
- Lot 8 – Brgy. Calafug, Conner, Apayao
- Lot 9 – Brgy. Dominglay, Licuan-Baay, Abra



- Lot 10 – Brgy. Ducligan, Bucloc, Abra

**E. PERIOD OF DELIVERY**

The Supply, Delivery and Construction of Plant Nurseries under the SIPAT: Maximizing Human Capital and Natural Resources in the CAR Project shall be on 31 December 2022.

**F. MANNER OF PAYMENT**

Payment shall be made after the submission of billing statement and other necessary documents.

**G. OTHER TERMS**

1. The labor component during the delivery (hauling) of supplies and materials and the construction of the nursery will be sourced from the community particularly the skilled and unskilled workers.
2. The cost of delivery for all materials including transport of equipment to each project site shall be borne by the winning contractor.
3. All permits and required clearances shall be shouldered by the winning contractor.